

The 1986 New Zealand rock lobster landings

B.M. Sanders

New Zealand Fisheries Data Report No. 32
ISSN 0113-2288
1988

The 1986 New Zealand rock lobster landings

B.M. Sanders

Published by MAFFish
Wellington
1988

ISBN 0-477-08069-3

MAF Fish

MAFFish is the fisheries business group of the New Zealand Ministry of Agriculture and Fisheries. It was established on 1 April 1987 and combines the functions of the old Fisheries Research Division and Fisheries Management Division and the fisheries functions of the old Economics Division.

The New Zealand Fisheries Data Report series continues the Fisheries Research Division Occasional Publication: Data Series.

Inquires to:
The Editor,
Fisheries Research Centre,
P.O. Box 297,
Wellington,
New Zealand.

Contents

	<i>Page</i>
Fig. 1 - Rock lobster fishing return scheme statistical areas ...	4
Introduction	5
Results	5
Fig. 2 - Rock lobster controlled fishery areas ...	6
Fig. 3 - Landings of <i>Jasus edwardsii</i> and <i>J. verreauxi</i> , North and South Islands and Chatham Islands, 1945-86 ...	7
Discussion	8
Fig. 4 - Landings statistics for <i>Jasus edwardsii</i> for each month during 1986	9
Fig. 5 - Length of coastline in each region of landing ...	10
Fig. 6 - Distribution of landings of <i>Jasus edwardsii</i> per vessel for each controlled fishery area, 1986 ...	11
Table 1 - Landings of <i>Jasus edwardsii</i> and <i>J. verreauxi</i> and number of vessels, 1945-86	12
Table 2 - Landings and effort data by statistical area for <i>Jasus edwardsii</i> , 1986	13
Table 3 - Landings of <i>Jasus edwardsii</i> by controlled fishery area, 1986	28
Table 4 - Landings of <i>Jasus verreauxi</i> by statistical area, 1986 ...	29
Table 5 - Landings of <i>Jasus edwardsii</i> and <i>J. verreauxi</i> by region of landing, 1986	30
Table 6 - Number of vessels in each controlled fishery area, 1986 ...	31

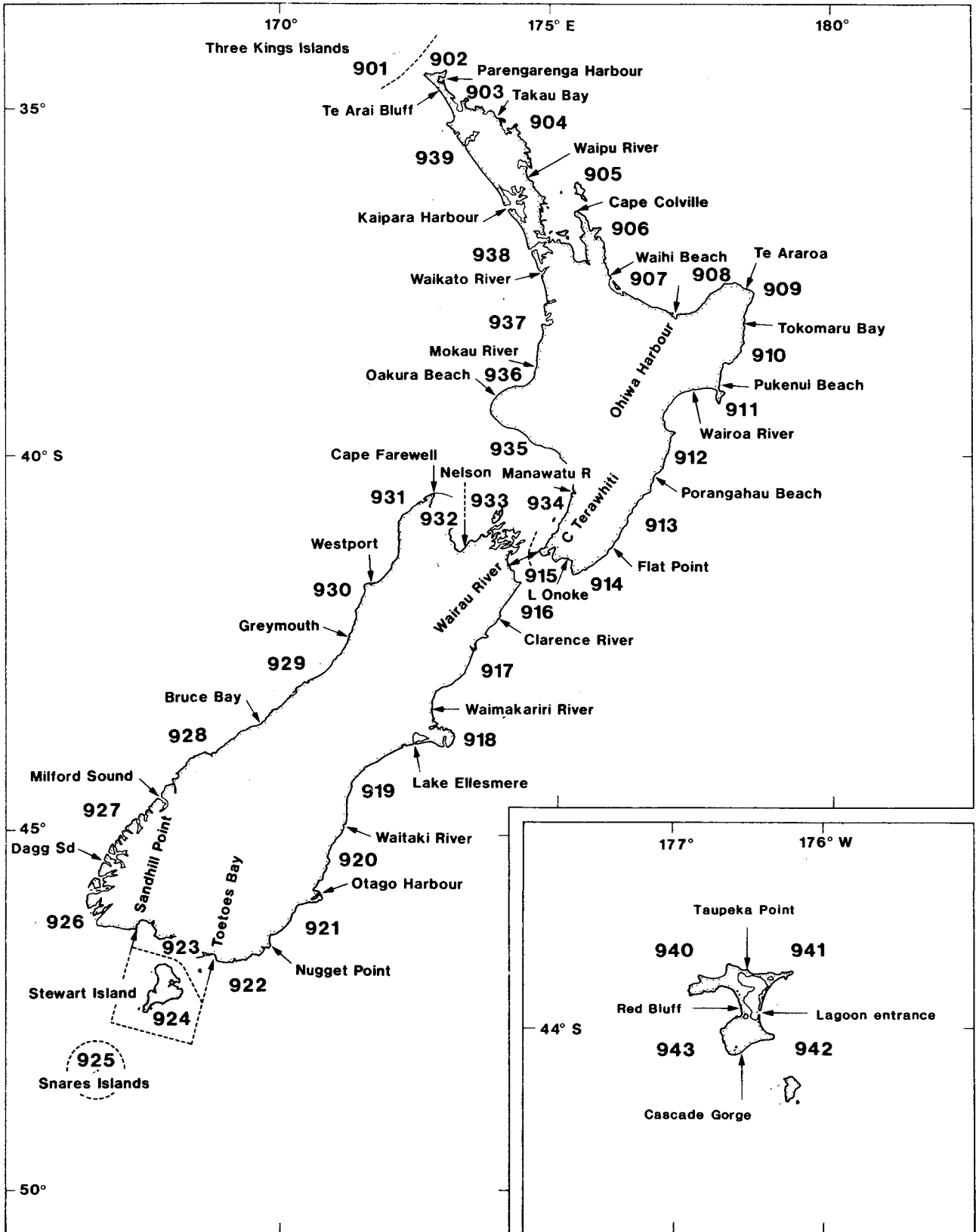


Fig. 1: Rock lobster fishing return scheme statistical areas.

Introduction

The fishery for New Zealand's two rock lobster species in 1986 was the single most important domestic fishery, with export earnings of about \$104 million f.o.b. Landings of *Jasus edwardsii* (the red or spiny rock lobster) were recorded from Three Kings Islands to Snares Islands, from both coasts of the North and South Islands, and from the Chatham Islands. *Jasus verreauxi* (the green or packhorse rock lobster) accounted for less than 1% of the total rock lobster landings, and they were taken mainly from Northland and the Bay of Plenty, the highest landings being from areas 901 and 902.

The data given here are the landings declared by commercial fishermen who use pots. Rock lobsters taken by handpicking, as a by-catch from other commercial fishing methods, and by amateurs are not recorded in the following tables and figures.

The data are grouped primarily by area fished, so that changes in landings and catch per unit of fishing effort for each area can be monitored. Landings are also grouped by region of landing to enable comparison with data in the annual *Report on Fisheries* published by the Ministry of Agriculture and Fisheries (formerly the N.Z. Marine Department) from 1945 to 1974.

Results

The New Zealand coastline (including the Chatham Islands) is divided into 43 statistical areas (Fig. 1) for the purposes of the rock lobster fishing return scheme. The rock lobster fishery is divided into 10 controlled fishery areas (Fig. 2), each made up of 2 or more of the statistical areas. Any differences between the boundaries of statistical areas and the corresponding controlled fishery areas are usually slight.

The rock lobster return form used in 1986 was the same as that used between 1983 and 1985, which was changed slightly from the form used since 1979. To encourage fishermen to provide accurate and complete data, the minimum information consistent with effective monitoring of the fishery was requested. This included a monthly record of statistical areas fished, day fished, number of pots lifted each day, and weight and species of rock lobsters (whole or tail) and by-catch species landed. From 1983 one additional set of information was requested; the maximum number of pots in the water at any one time during the month. The base port was no longer requested, and slight changes to the layout of the form were made to improve computer data entry (and keep the forms compatible with new forms for other fishing methods).

The landed weight figures shown in the tables and figures are all whole weight values. When only tails were landed, tail weights were multiplied by three to obtain the approximate equivalent whole weights. Fishermen are permitted to tail their catch at sea and land only the tails in statistical areas 923-928 and part of area 922, which make up the Southern controlled fishery area (H). In the rest of New Zealand, rock lobsters must be landed whole and alive.

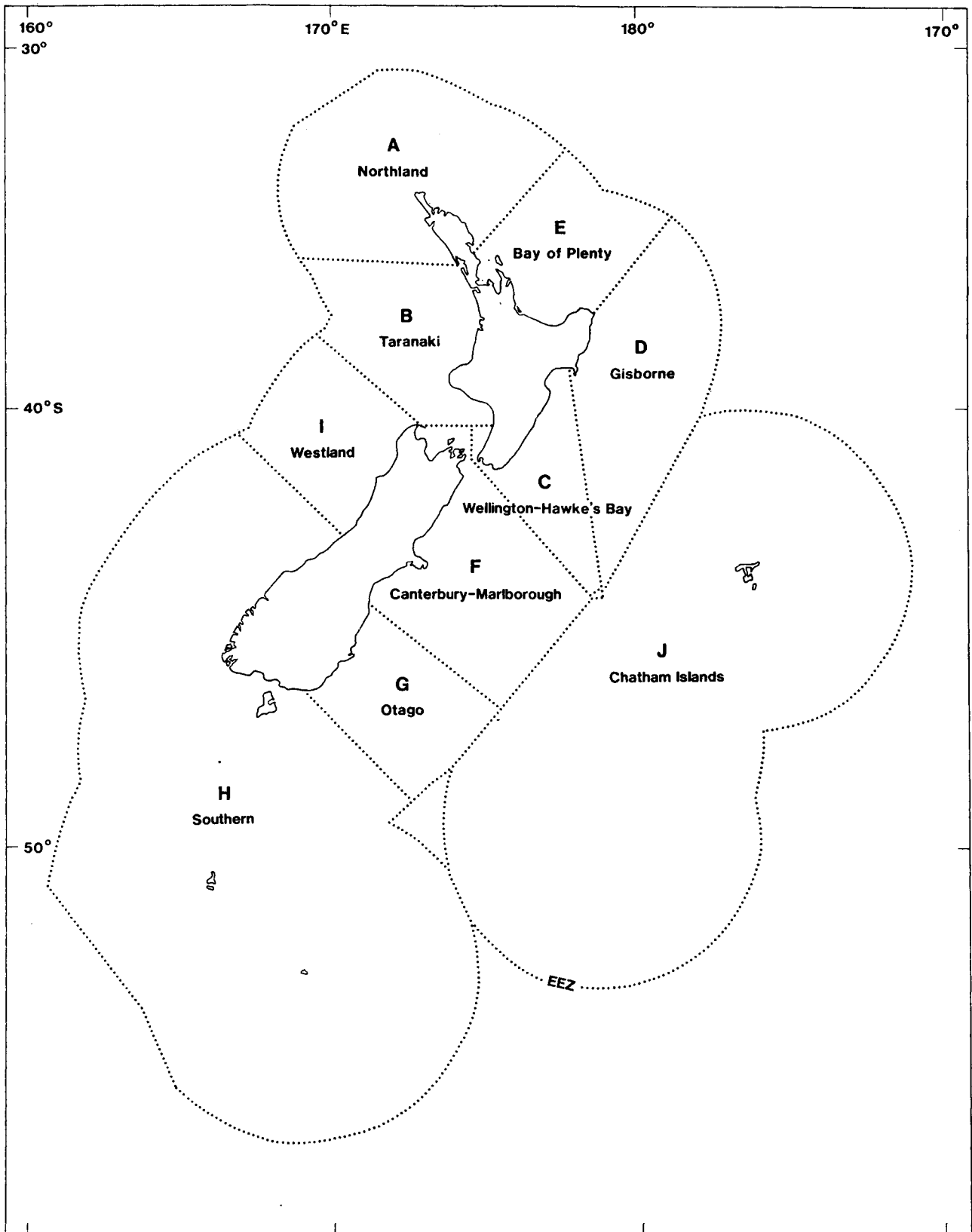


Fig. 2: Rock lobster controlled fishery areas.

Total landings of *J. edwardsii* and *J. verreauxi* are shown for the North and South Islands combined and for the Chatham Islands for each year from 1945 to 1986 in Table 1 and Fig. 3. In addition, the number of registered rock lobster vessels for each year is shown in Table 1. Before the introduction of the controlled rock lobster fishery in 1980-81, the higher number of vessels included many permits that were not fully used. Data for 1945-74 are from the port of landing figures in the annual *Report on Fisheries*. Data for 1975-78 are from unpublished figures from port of landing totals recorded by the Ministry of Agriculture and Fisheries. Data for 1979-86 are from fishing return forms submitted by rock lobster fishermen. The 1985 totals have been updated with additional data received after 1 August 1986. The landings for 1986 are those declared on fishing return forms received and processed by 31 December 1987.

Landings and effort data for *J. edwardsii* for each month during 1986 for each of the statistical areas and the combined totals for all of New Zealand are shown in Table 2. These data have also been grouped by controlled fishery area and are shown in Table 3. The columns in Tables 2 and 3 which present landed weight for returns with effort data include the landed weight figures for only those vessels which supplied data on number of days fished. There are some areas where landings data are from more than a single day's fishing because a few fishermen failed to mark each day fished and gave only the days landed or total landings for the month. Thus, in these areas there may be a slight under-recording of days fished. This is restricted mainly to the Southern fishery and is unlikely to have a significant effect on the estimates of catch rates. The estimated number of pot-lifts is calculated from the average number of pots hauled per day fished (where numbers of pot-lifts were given) multiplied by total days fished. This estimation of pot-lifts has been rounded by one place (to tens). In addition, pot types and sizes are not standard around New Zealand and this may affect the average catch per pot-lift. The last column in Tables 2 and 3 (total landed weight for all returns) includes the landed weight figures supplied for all vessels, including those without data on the number of days fished.

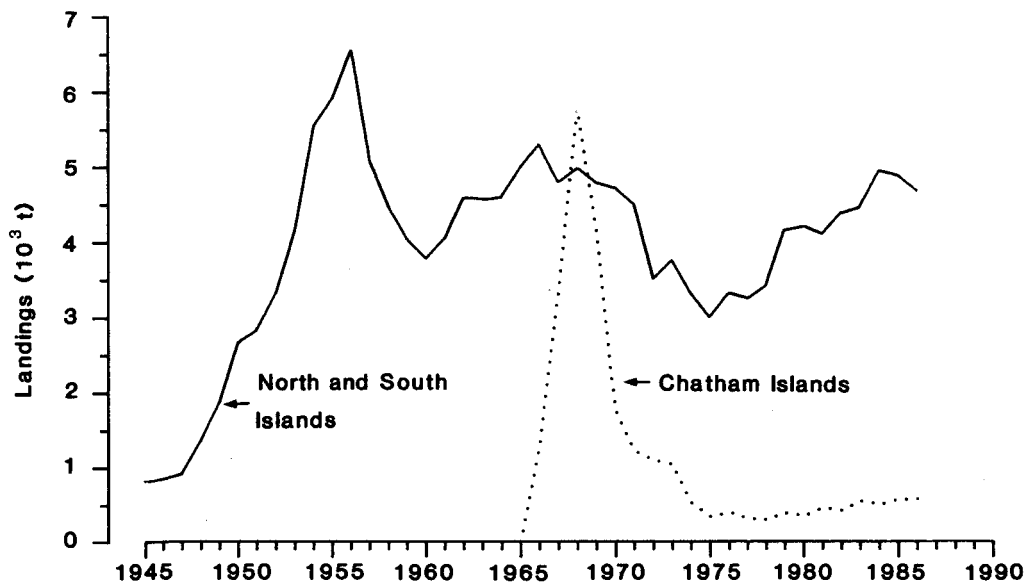


Fig. 3: Landings of *Jasus edwardsii* and *J. verreauxi* combined for the North and South Islands combined and the Chatham Islands during 1945-86.

Total landings of *J. edwardsii*, effort, and landings per unit of effort are shown for each month during 1986 for all areas combined in Fig. 4. Landings and effort were highest during October-December and lowest during March-May.

Total landings of *J. verreauxi* and *J. edwardsii* combined by region of landing are shown in Table 5. Landings have been grouped into regions which correspond as closely as possible to the port of landing in the annual *Report on Fisheries*. As many as 40 landing points may be included in a single region (Fig. 5). These regions or ports of landing are sometimes not good indicators of areas actually fished, especially in the south of the South Island.

The distribution of landings per vessel is shown grouped into 1 t intervals for each of the controlled fishery areas for 1986 in Fig. 6.

For each vessel, the maximum number of pots in the water at any time during the year has been grouped into 50 pot intervals for each controlled fishery area. Table 6 shows the number of vessels in each interval for 1986. (The total number of vessels in the table is less than that fishing because this information was not given on all returns.)

Discussion

Total rock lobster landings for New Zealand remained fairly constant during 1979-81 and then increased by about 5% in 1982, 4% in 1983, and 8% in 1984. The total reported landings for 1985 (5481 t) were close to the 1984 landings (5453 t), and in 1986 landings decreased by less than 5% to 5227 t. Since the licensing of the rock lobster fishery in 1980-81 there has been an improvement in the statistics supplied by fishermen, and this may be reflected in the figures since 1981. However, because returns are still being submitted without all the requested effort information there are still gaps in the data available.

In addition to the landings from lobster pots, 34.0 t (less than 1% of the total New Zealand rock lobster landings) of *J. edwardsii* were caught by diving; of this, 32.3 t were landed in the Chatham Islands. About 3 t were reported taken as a by-catch of all other commercial fishing methods.

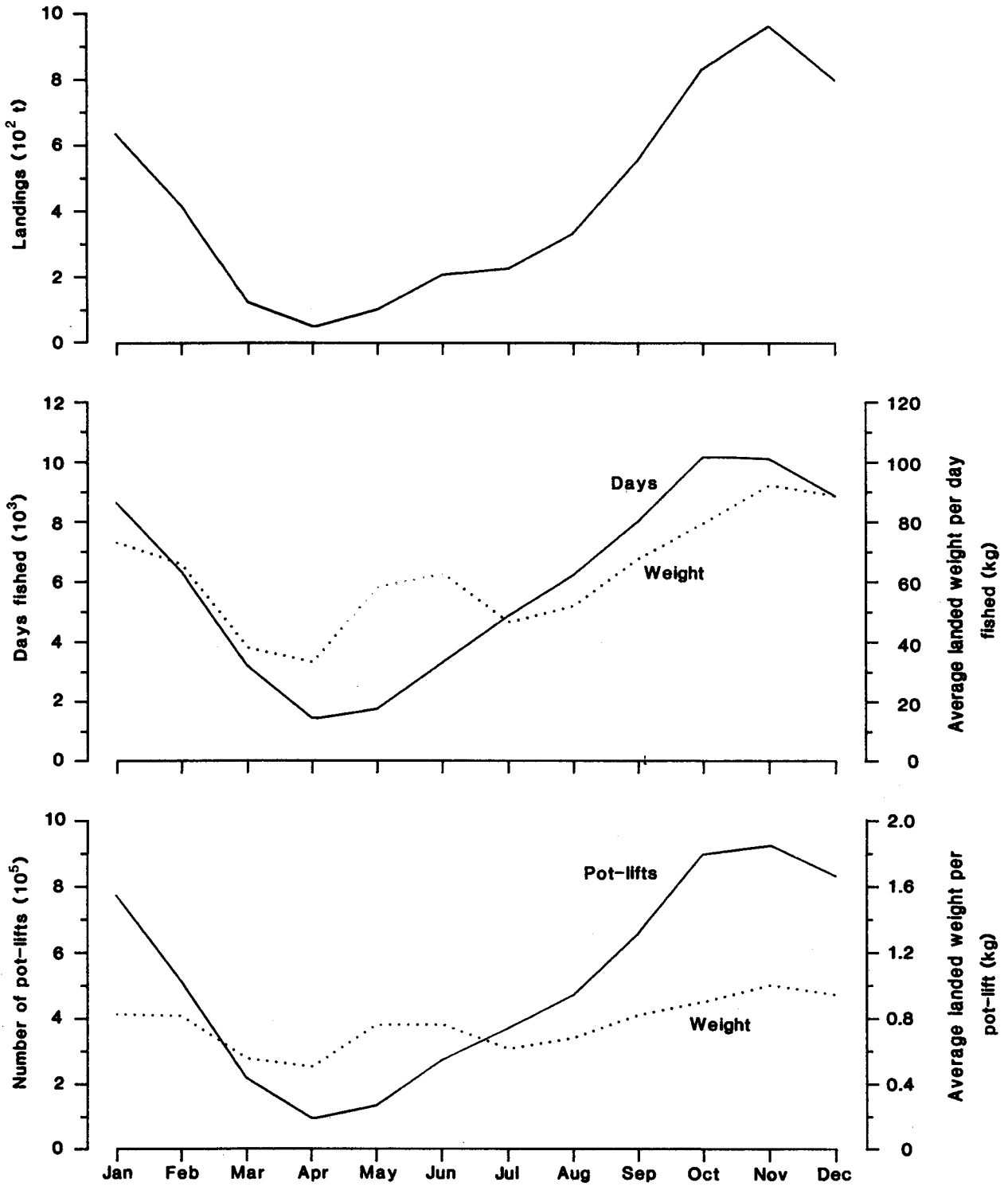


Fig. 4: Landings of *Jasus edwardsii* (whole weight), number of days fished, number of pot-lifts, average landed weight per day fished, and average landed weight per pot-lift for each month during 1986 for all areas combined.

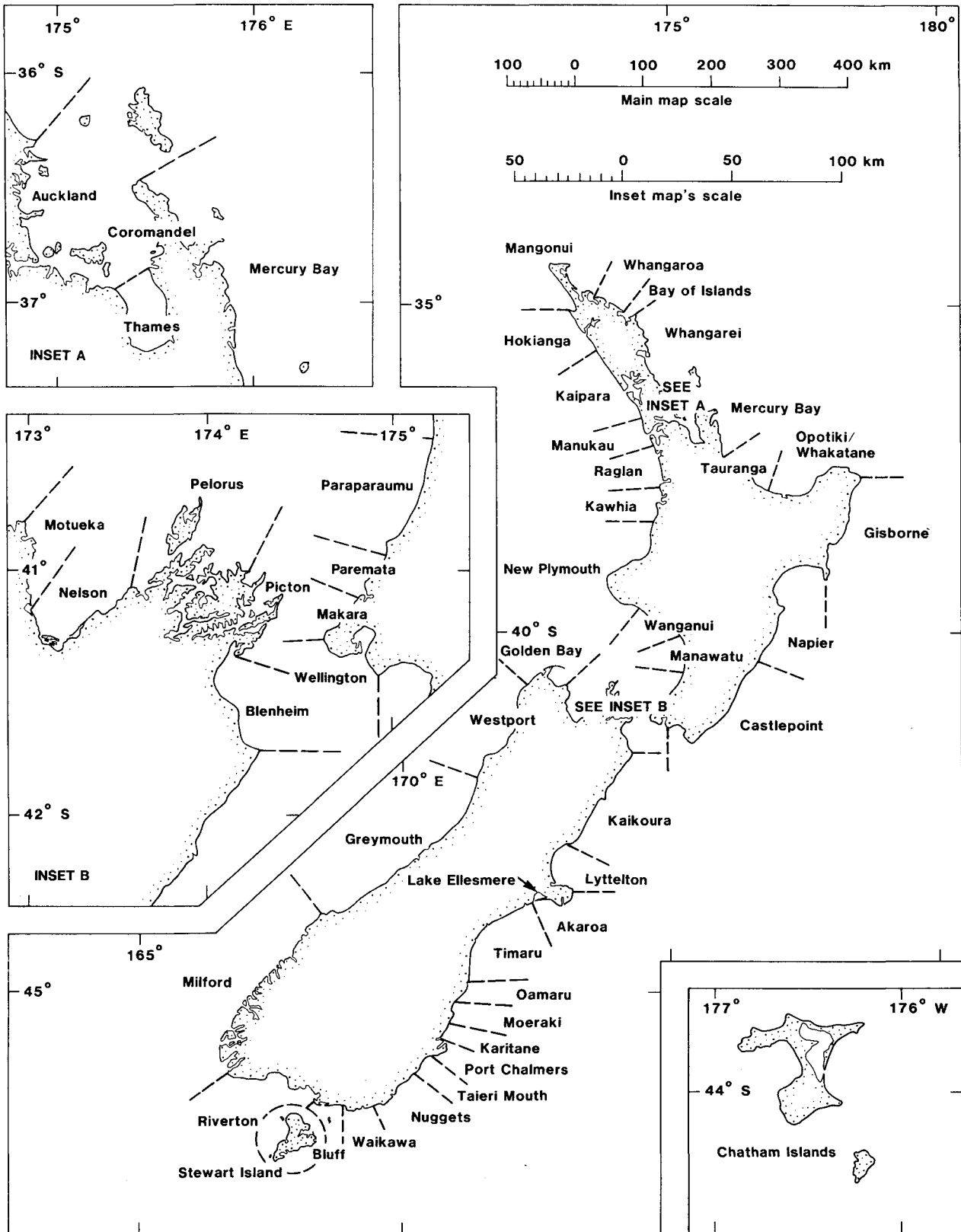


Fig. 5: Length of coastline included in each of the regions of landing shown in Table 5.

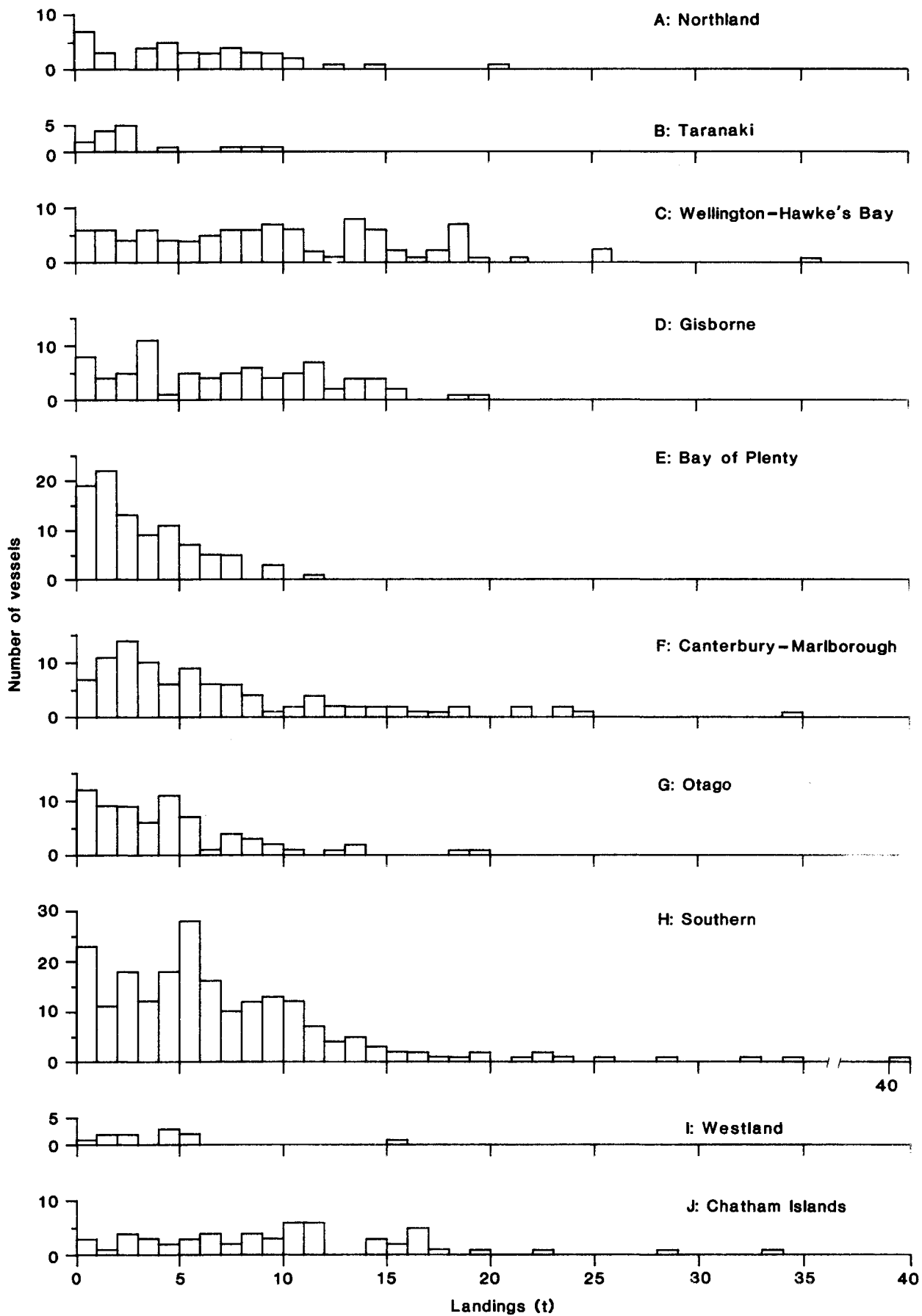


Fig. 6: Total landings of *Jasus edwardsii* per vessel for 1986 grouped into 1 t intervals for each controlled fishery area. The 0.00-0.99 t interval does not include data from vessels which declared nil landings for the entire year.

TABLE 1: Landings (whole weight) of *Jasus edwardsii* and *J. verreauxi* combined, and number of registered rock lobster vessels, 1945-86

Year	North and South Islands		Chatham Islands		New Zealand	
	Landings (t)	No. of vessels	Landings (t)	No. of vessels	Landings (t)	No. of vessels
1945	809	90			809	90
1946	854	98			854	98
1947	919	112			919	112
1948	1 360	148			1 360	148
1949	1 872	406			1 872	406
1950	2 672	238			2 672	238
1951	2 834	471			2 834	471
1952	3 324	500			3 324	500
1953	4 160	560			4 160	560
1954	5 541	557			5 541	557
1955	5 909	551			5 909	551
1956	6 547	584			6 547	584
1957	5 049	528			5 049	528
1958	4 447	728			4 447	728
1959	4 018	632			4 018	632
1960	3 762	706			3 762	706
1961	4 042	710			4 042	710
1962	4 583	812			4 583	812
1963	4 554	950			4 554	950
1964	4 597	659			4 597	659
1965	4 984	783	2	1	4 986	784
1966	5 295	829	1 271	36	6 566	865
1967	4 782	946	3 313	59	8 095	1 005
1968	4 975	1 097	5 958	120	10 933	1 217
1969	4 768	1 280	4 147	186	8 915	1 466
1970	4 699	1 246	1 751	125	6 450	1 371
1971	4 478	1 298	1 211	91	5 689	1 389
1972	3 495	1 399	1 088	82	4 583	1 481
1973	3 748	1 460	1 033	78	4 781	1 538
1974	3 305	1 309	518	61	3 823	1 370
1975	2 987	1 393	331	52	3 318	1 445
1976	3 311	1 639	391	45	3 702	1 684
1977	3 237	1 903	303	56	3 540	1 959
1978	3 418	1 786	293	65	3 711	1 851
1979	4 156	1 517	391	57	4 547	1 574
1980	4 207	1 074	342	51	4 549	1 125
1981	4 093	909	459	61	4 552	970
1982	4 384	815	417	64	4 801	879
1983	4 461	788	553	64	5 014	852
1984	4 956	773	497	62	5 453	835
1985	4 901	773	580	61	5 481	834
1986	4 665	744	562	65	5 227	809

TABLE 2: Landings (whole weight) of *Jasus edwardsii* and effort data during 1986 by statistical area; area boundaries shown in Fig. 1

Month	Landed weight (kg) for returns with effort data	No. of vessel days fished	Av. weight landed per day fished (kg)	Estimated No. of pot-lifts	Av. weight landed per pot-lift (kg)	Total landed weight (kg) for all returns
Area 901						
Jan	3 362	58	58.0	3 460	0.97	3 362
Feb	2 249	45	50.0	2 230	1.01	2 249
Mar	2 449	37	66.2	2 580	0.95	2 449
Apr	155	18	8.6	720	0.21	155
May	0	4	0.0	80	0.00	0
Jun	455	13	35.0	320	1.42	455
Jul	473	12	39.4	320	1.48	473
Aug	376	11	34.2	380	0.99	376
Sep	2 478	42	59.0	1 950	1.27	2 478
Oct	4 662	44	106.0	2 800	1.66	4 662
Nov	5 230	49	106.7	2 840	1.84	5 230
Dec	2 319	30	77.3	1 790	1.30	2 319
Total	24 205	363	66.7	19 470	1.24	24 205
Area 902						
Jan	10 772	117	92.1	8 370	1.29	10 772
Feb	14 086	120	117.4	8 450	1.67	14 086
Mar	5 567	95	58.6	6 620	0.84	5 567
Apr	2 494	43	58.0	3 350	0.74	2 494
May	522	11	47.4	850	0.61	522
Jun	128	8	15.9	560	0.23	128
Jul	2 033	45	45.2	2 510	0.81	2 033
Aug	4 619	78	59.2	5 430	0.85	4 619
Sep	3 812	69	55.2	5 290	0.72	3 812
Oct	5 854	81	72.3	5 780	1.01	5 854
Nov	5 988	90	66.5	6 030	0.99	5 988
Dec	5 129	85	60.3	6 010	0.85	5 129
Total	61 002	842	72.4	59 250	1.03	61 002
Area 903						
Jan	3 243	46	70.5	3 450	0.94	3 243
Feb	2 802	41	68.3	2 390	1.17	2 802
Mar	1 402	42	33.4	2 000	0.70	1 402
Apr	64	2	32.0	100	0.64	64
May	-	-	-	-	-	-
Jun	75	5	14.9	140	0.53	75
Jul	5 413	53	102.1	4 110	1.32	5 413
Aug	4 906	100	49.1	7 140	0.69	4 906
Sep	5 180	112	46.2	7 490	0.69	5 180
Oct	5 500	87	63.2	7 050	0.78	6 155
Nov	3 851	94	41.0	6 670	0.58	3 851
Dec	5 929	92	64.4	7 790	0.76	5 929
Total	38 364	674	56.9	48 330	0.79	39 020

TABLE 2: Landings (whole weight) of *Jasus edwardsii* and effort data during 1986 by statistical area; area boundaries shown in Fig. 1 (continued)

Month	Landed weight (kg) for returns with effort data	No. of vessel days fished	Av. weight landed per day fished (kg)	Estimated No. of pot-lifts	Av. weight landed per pot-lift (kg)	Total landed weight (kg) for all returns
Area 904						
Jan	9 757	184	53.0	11 860	0.82	9 757
Feb	7 454	169	44.1	9 960	0.75	7 454
Mar	2 932	98	29.9	5 770	0.51	2 932
Apr	493	21	23.5	880	0.56	493
May	514	32	16.1	1 280	0.40	514
Jun	583	36	16.2	1 810	0.32	583
Jul	2 148	78	27.5	4 210	0.51	2 148
Aug	5 680	143	39.7	8 080	0.70	5 680
Sep	5 893	139	42.4	9 960	0.59	5 893
Oct	5 740	162	35.4	11 070	0.52	5 740
Nov	6 110	120	50.9	10 710	0.57	6 110
Dec	7 660	161	47.6	16 250	0.47	7 660
Total	54 963	1 343	40.9	91 840	0.60	54 963
Area 905						
Jan	2 629	155	17.0	6 390	0.41	2 629
Feb	2 970	153	19.4	7 160	0.41	2 970
Mar	1 778	104	17.1	5 160	0.34	1 778
Apr	538	41	13.1	1 710	0.31	538
May	294	13	22.6	840	0.35	294
Jun	469	46	10.2	1 570	0.30	469
Jul	2 566	140	18.3	6 860	0.37	2 566
Aug	3 702	186	19.9	8 830	0.42	3 702
Sep	4 700	225	20.9	10 950	0.43	4 700
Oct	4 747	218	21.8	10 400	0.46	4 747
Nov	3 087	141	21.9	6 200	0.50	3 087
Dec	1 879	109	17.2	4 500	0.42	1 879
Total	29 358	1 531	19.2	70 570	0.42	29 358
Area 906						
Jan	16 128	487	33.1	36 630	0.44	16 128
Feb	11 946	435	27.5	29 150	0.41	11 946
Mar	5 562	317	17.5	17 070	0.33	5 562
Apr	1 538	99	15.5	3 870	0.40	1 538
May	358	38	9.4	1 210	0.30	358
Jun	534	36	14.8	1 840	0.29	534
Jul	6 609	349	18.9	23 470	0.28	6 609
Aug	11 576	482	24.0	36 070	0.32	11 576
Sep	12 872	497	25.9	40 760	0.32	12 872
Oct	20 963	633	33.1	52 310	0.40	20 963
Nov	16 528	543	30.4	45 100	0.37	16 829
Dec	20 064	582	34.5	45 630	0.44	20 064
Total	124 676	4 498	27.7	333 110	0.37	124 977

TABLE 2: Landings (whole weight) of *Jasus edwardsii* and effort data during 1986 by statistical area; area boundaries shown in Fig. 1 (continued)

Month	Landed weight (kg) for returns with effort data	No. of vessel days fished	Av. weight landed per day fished (kg)	Estimated No. of pot-lifts	Av. weight landed per pot-lift (kg)	Total landed weight (kg) for all returns
Area 907						
Jan	12 154	217	56.0	18 410	0.66	12 154
Feb	9 581	190	50.4	14 700	0.65	9 581
Mar	4 533	139	32.6	9 800	0.46	4 533
Apr	397	24	16.6	1 450	0.27	397
May	-	-	-	-	-	-
Jun	66	6	11.0	300	0.22	66
Jul	3 613	119	30.4	8 750	0.41	3 613
Aug	5 565	193	28.8	16 440	0.34	5 565
Sep	6 182	184	33.6	15 680	0.39	6 182
Oct	10 975	249	44.1	21 180	0.52	10 975
Nov	9 273	234	39.6	20 200	0.46	9 273
Dec	7 689	206	37.3	18 280	0.42	7 689
Total	70 028	1 761	39.8	145 190	0.48	70 028
Area 908						
Jan	14 626	419	34.9	35 560	0.41	14 626
Feb	4 303	263	16.4	16 690	0.26	4 303
Mar	1 810	149	12.1	7 170	0.25	1 810
Apr	115	15	7.7	450	0.26	115
May	-	-	-	-	-	-
Jun	352	24	14.7	1 310	0.27	352
Jul	4 461	193	23.1	10 070	0.44	4 461
Aug	6 620	276	24.0	21 310	0.31	6 620
Sep	7 193	317	22.7	24 510	0.29	7 193
Oct	10 199	373	27.3	28 210	0.36	10 199
Nov	12 226	379	32.3	31 320	0.39	12 226
Dec	13 052	385	33.9	31 550	0.41	13 052
Total	74 958	2 793	26.8	208 150	0.36	74 958
Area 909						
Jan	10 518	140	75.1	15 300	0.69	10 518
Feb	7 420	122	60.8	11 340	0.65	7 420
Mar	3 456	53	65.2	4 820	0.72	3 456
Apr	729	14	52.1	950	0.77	729
May	-	-	-	-	-	-
Jun	780	23	33.9	2 880	0.27	780
Jul	5 320	83	64.1	8 900	0.60	5 320
Aug	3 548	68	52.2	6 480	0.55	3 548
Sep	3 652	55	66.4	5 140	0.71	3 652
Oct	7 809	127	61.5	12 500	0.62	7 809
Nov	14 765	166	88.9	17 090	0.86	14 765
Dec	13 911	135	103.0	14 080	0.99	13 911
Total	71 907	986	72.9	99 480	0.72	71 907

TABLE 2: Landings (whole weight) of *Jasus edwardsii* and effort data during 1986 by statistical area; area boundaries shown in Fig. 1 (continued)

Month	Landed weight (kg) for returns with effort data	No. of vessel days fished	Av. weight landed per day fished (kg)	Estimated No. of pot-lifts	Av. weight landed per pot-lift (kg)	Total landed weight (kg) for all returns
Area 910						
Jan	26 844	510	52.6	49 350	0.54	26 844
Feb	24 163	360	67.1	33 970	0.71	24 163
Mar	12 673	203	62.4	19 020	0.67	12 673
Apr	3 098	89	34.8	7 630	0.41	3 098
May	344	11	31.3	1 140	0.30	344
Jun	15 373	290	53.0	30 510	0.50	15 373
Jul	11 584	294	39.4	26 780	0.43	11 584
Aug	2 324	91	25.5	7 460	0.31	2 324
Sep	9 422	221	42.6	21 430	0.44	9 422
Oct	56 870	761	74.7	88 260	0.64	56 870
Nov	76 400	696	109.8	82 900	0.92	76 400
Dec	49 551	536	92.4	62 900	0.79	49 551
Total	288 645	4 062	71.1	431 350	0.67	288 645
Area 911						
Jan	49 184	528	93.2	49 860	0.99	49 184
Feb	27 555	354	77.8	33 290	0.83	27 555
Mar	8 253	179	46.1	12 890	0.64	8 253
Apr	3 304	90	36.7	5 740	0.58	3 304
May	103	2	51.5	200	0.52	103
Jun	8 350	178	46.9	12 650	0.66	8 350
Jul	8 622	220	39.2	17 740	0.49	8 622
Aug	6 152	204	30.2	15 270	0.40	6 152
Sep	5 619	245	22.9	20 160	0.28	5 619
Oct	28 589	431	66.3	38 530	0.74	28 589
Nov	42 707	450	94.9	43 320	0.99	42 707
Dec	40 726	429	94.9	40 810	1.00	40 726
Total	229 163	3 310	69.2	290 460	0.79	229 163
Area 912						
Jan	26 360	375	70.3	32 620	0.81	26 360
Feb	14 274	232	61.5	19 660	0.73	14 274
Mar	7 123	161	44.2	11 890	0.60	7 123
Apr	1 095	40	27.4	2 150	0.51	1 095
May	2 615	57	45.9	3 840	0.68	2 615
Jun	21 289	253	84.1	22 640	0.94	21 289
Jul	9 162	171	53.6	14 360	0.64	9 162
Aug	4 012	124	32.4	9 290	0.43	4 012
Sep	9 978	208	48.0	17 860	0.56	9 978
Oct	41 226	444	92.9	40 490	1.02	41 226
Nov	30 780	317	97.1	28 220	1.09	30 780
Dec	28 642	301	95.2	25 980	1.10	28 642
Total	196 554	2 683	73.3	229 000	0.86	196 554

TABLE 2: Landings (whole weight) of *Jasus edwardsii* and effort data during 1986 by statistical area; area boundaries shown in Fig. 1 (continued)

Month	Landed weight (kg) for returns with effort data	No. of vessel days fished	Av. weight landed per day fished (kg)	Estimated No. of pot-lifts	Av. weight landed per pot-lift (kg)	Total landed weight (kg) for all returns
Area 913						
Jan	38 540	314	122.7	38 960	0.99	38 540
Feb	12 039	167	72.1	16 770	0.72	12 039
Mar	3 286	58	56.7	4 910	0.67	3 286
Apr	1 356	28	48.4	2 300	0.59	1 356
May	14 667	144	101.9	14 680	1.00	14 667
Jun	24 950	251	99.4	28 260	0.88	24 950
Jul	10 627	181	58.7	19 930	0.53	10 627
Aug	7 119	109	65.3	13 240	0.54	7 119
Sep	14 292	203	70.4	24 770	0.58	14 292
Oct	45 917	345	133.1	46 680	0.98	45 917
Nov	39 359	308	127.8	35 570	1.11	39 359
Dec	56 386	315	179.0	42 970	1.31	56 386
Total	268 539	2 423	110.8	289 040	0.93	268 539
Area 914						
Jan	41 357	572	72.3	57 740	0.72	41 357
Feb	14 343	290	49.5	25 050	0.57	14 343
Mar	1 421	54	26.3	3 670	0.39	1 421
Apr	186	1	186.0	120	1.55	186
May	12 038	149	80.8	14 100	0.85	12 038
Jun	40 129	469	85.6	45 410	0.88	40 129
Jul	19 036	326	58.4	30 640	0.62	19 036
Aug	10 925	250	43.7	22 650	0.48	10 925
Sep	27 053	431	62.8	38 670	0.70	27 053
Oct	56 875	477	119.2	51 650	1.10	56 875
Nov	66 337	520	127.6	58 150	1.14	66 337
Dec	52 713	474	111.2	50 170	1.05	52 713
Total	342 413	4 013	85.3	398 020	0.86	342 413
Area 915						
Jan	18 882	288	65.6	29 030	0.65	18 882
Feb	13 903	253	55.0	23 060	0.60	13 903
Mar	1 556	48	32.4	4 060	0.38	1 556
Apr	-	-	-	-	-	-
May	1 552	27	57.5	2 160	0.72	1 552
Jun	11 397	174	65.5	18 110	0.63	11 397
Jul	5 823	142	41.0	13 230	0.44	5 823
Aug	3 734	87	42.9	7 700	0.48	3 734
Sep	9 486	199	47.7	20 630	0.46	9 486
Oct	17 322	235	73.7	23 370	0.74	17 322
Nov	18 040	263	68.6	26 860	0.67	18 040
Dec	11 876	169	70.3	17 570	0.68	11 876
Total	113 570	1 885	60.2	185 780	0.61	113 570

TABLE 2: Landings (whole weight) of *Jasus edwardsii* and effort data during 1986 by statistical area; area boundaries shown in Fig. 1 (continued)

Month	Landed weight (kg) for returns with effort data	No. of vessel days fished	Av. weight landed per day fished (kg)	Estimated No. of pot-lifts	Av. weight landed per pot-lift (kg)	Total landed weight (kg) for all returns
Area 916						
Jan	28 327	211	134.3	37 050	0.76	28 327
Feb	9 130	119	76.7	14 610	0.62	9 130
Mar	2 179	54	40.4	5 470	0.40	2 179
Apr	2 251	68	33.1	5 070	0.44	2 251
May	5 863	75	78.2	8 700	0.67	5 863
Jun	4 123	68	60.6	6 770	0.61	4 123
Jul	2 802	48	58.4	4 580	0.61	2 802
Aug	1 125	29	38.8	2 490	0.45	1 125
Sep	2 571	53	48.5	5 400	0.48	2 571
Oct	6 821	99	68.9	14 830	0.46	6 821
Nov	17 462	147	118.8	27 970	0.62	17 462
Dec	26 287	194	135.5	35 440	0.74	26 287
Total	108 942	1 165	93.5	168 380	0.65	108 942
Area 917						
Jan	104 588	1 237	84.5	116 280	0.90	104 588
Feb	40 582	763	53.2	66 050	0.61	40 582
Mar	15 450	517	29.9	36 680	0.42	15 450
Apr	16 622	503	33.0	35 490	0.47	16 622
May	40 463	723	56.0	60 790	0.67	40 463
Jun	14 852	359	41.4	27 510	0.54	14 852
Jul	3 307	122	27.1	8 250	0.40	3 307
Aug	1 956	61	32.1	3 800	0.51	1 956
Sep	10 336	341	30.3	24 310	0.43	10 336
Oct	26 767	760	35.2	57 100	0.47	26 767
Nov	101 248	1 107	91.5	98 970	1.02	101 248
Dec	91 040	1 120	81.3	111 650	0.82	91 040
Total	467 211	7 613	61.4	646 880	0.72	467 211
Area 918						
Jan	9 391	155	60.6	14 300	0.66	9 391
Feb	3 640	95	38.3	6 680	0.54	3 640
Mar	1 041	53	19.6	3 150	0.33	1 041
Apr	-	-	-	-	-	-
May	-	-	-	-	-	-
Jun	319	12	26.5	390	0.82	319
Jul	2 566	84	30.5	3 540	0.72	2 566
Aug	3 784	131	28.9	6 130	0.62	3 784
Sep	7 899	200	39.5	10 030	0.79	7 899
Oct	12 435	224	55.5	10 790	1.15	12 435
Nov	6 165	159	38.8	8 150	0.76	6 165
Dec	5 752	142	40.5	6 820	0.84	5 752
Total	52 991	1 255	42.2	69 980	0.76	52 991

TABLE 2: Landings (whole weight) of *Jasus edwardsii* and effort data during 1986 by statistical area; area boundaries shown in Fig. 1 (continued)

Month	Landed weight (kg) for returns with effort data	No. of vessel days fished	Av. weight landed per day fished (kg)	Estimated No. of pot-lifts	Av. weight landed per pot-lift (kg)	Total landed weight (kg) for all returns
Area 919						
Jan	31	3	10.2	180	0.17	31
Feb	48	5	9.5	300	0.16	48
Mar	-	-	-	-	-	-
Apr	-	-	-	-	-	-
May	19	1	19.0	60	0.32	19
Jun	540	10	54.0	860	0.63	540
Jul	3 599	79	45.6	6 280	0.57	3 599
Aug	1 973	38	51.9	3 280	0.60	1 973
Sep	3 491	47	74.3	3 790	0.92	3 491
Oct	998	32	31.2	2 680	0.37	998
Nov	669	27	24.8	1 890	0.35	669
Dec	113	4	28.1	400	0.28	113
Total	11 480	246	46.7	19 720	0.58	11 480
Area 920						
Jan	4 219	132	32.0	7 790	0.54	4 219
Feb	1 715	75	22.9	2 860	0.60	1 715
Mar	66	6	11.0	190	0.35	66
Apr	-	-	-	-	-	-
May	9	4	2.2	-	-	9
Jun	13 590	170	79.9	13 370	1.02	13 590
Jul	45 367	785	57.8	65 940	0.69	45 367
Aug	46 686	699	66.8	62 020	0.75	46 686
Sep	54 343	673	80.7	64 190	0.85	54 343
Oct	34 973	503	69.5	45 220	0.77	34 973
Nov	19 390	337	57.5	28 710	0.68	19 390
Dec	11 866	288	41.2	23 620	0.50	11 866
Total	232 223	3 672	63.2	313 910	0.74	232 223
Area 921						
Jan	729	28	26.0	1 590	0.46	729
Feb	1 739	35	49.7	1 700	1.02	1 739
Mar	191	13	14.7	390	0.49	191
Apr	-	-	-	-	-	-
May	138	12	11.5	240	0.58	138
Jun	1 823	35	52.1	1 900	0.96	1 823
Jul	10 565	172	61.4	14 660	0.72	10 565
Aug	15 902	208	76.5	14 810	1.07	16 661
Sep	24 888	280	88.9	19 150	1.30	24 888
Oct	10 617	154	68.9	9 250	1.15	10 617
Nov	9 047	136	66.5	8 460	1.07	9 047
Dec	6 249	99	63.1	5 630	1.11	6 249
Total	81 888	1 172	69.9	77 780	1.05	82 647

TABLE 2: Landings (whole weight) of *Jasus edwardsii* and effort data during 1986 by statistical area; area boundaries shown in Fig. 1 (continued)

Month	Landed weight (kg) for returns with effort data	No. of vessel days fished	Av. weight landed per day fished (kg)	Estimated No. of pot-lifts	Av. weight landed per pot-lift (kg)	Total landed weight (kg) for all returns
Area 922						
Jan	-	-	-	-	-	-
Feb	-	-	-	-	-	-
Mar	-	-	-	-	-	-
Apr	-	-	-	-	-	-
May	-	-	-	-	-	-
Jun	-	-	-	-	-	-
Jul	888	41	21.7	2 010	0.44	888
Aug	2 950	49	60.2	3 290	0.90	2 950
Sep	6 287	67	93.8	4 550	1.38	6 287
Oct	4 484	46	97.5	3 050	1.47	4 484
Nov	2 212	41	53.9	1 940	1.14	2 212
Dec	297	13	22.8	430	0.69	297
Total	17 118	257	66.6	15 270	1.12	17 118
Area 923						
Jan	8 536	120	71.1	8 920	0.96	8 536
Feb	2 553	43	59.4	3 010	0.85	2 553
Mar	338	19	17.8	770	0.44	338
Apr	504	9	56.0	430	1.17	504
May	2 047	35	58.5	1 700	1.20	2 047
Jun	1 914	38	50.4	1 640	1.17	1 914
Jul	1 485	37	40.1	1 770	0.84	1 485
Aug	8 115	163	49.8	11 540	0.70	8 115
Sep	23 540	240	98.1	20 970	1.12	23 540
Oct	45 309	327	138.6	31 400	1.44	45 309
Nov	37 061	301	123.1	28 300	1.31	37 061
Dec	19 738	202	97.7	19 920	0.99	19 738
Total	151 140	1 534	98.5	130 370	1.16	151 140
Area 924						
Jan	6 866	102	67.3	6 380	1.08	6 866
Feb	4 232	50	84.6	3 880	1.09	4 232
Mar	477	22	21.7	1 070	0.45	477
Apr	485	19	25.5	1 560	0.31	485
May	323	13	24.8	870	0.37	323
Jun	1 441	38	37.9	2 620	0.55	1 441
Jul	4 425	131	33.8	5 660	0.78	4 425
Aug	40 052	584	68.6	35 790	1.12	40 052
Sep	111 953	760	147.3	54 130	2.07	115 737
Oct	102 389	739	138.6	54 480	1.88	118 762
Nov	91 589	599	152.9	46 210	1.98	118 625
Dec	38 340	331	115.8	24 670	1.55	44 457
Total	402 569	3 388	118.8	237 320	1.70	455 879

TABLE 2: Landings (whole weight) of *Jasus edwardsii* and effort data during 1986 by statistical area; area boundaries shown in Fig. 1 (continued)

Month	Landed weight (kg) for returns with effort data	No. of vessel days fished	Av. weight landed per day fished (kg)	Estimated No. of pot-lifts	Av. weight landed per pot-lift (kg)	Total landed weight (kg) for all returns
Area 925						
Jan	135	2	67.5	40	3.38	2 687
Feb	12	2	6.0	-	-	1 677
Mar	1 625	8	203.1	550	2.95	1 625
Apr	417	6	69.5	380	1.10	417
May	1 085	20	54.2	670	1.62	1 085
Jun	1 335	20	66.8	760	1.76	1 335
Jul	339	16	21.2	390	0.87	339
Aug	507	10	50.7	210	2.41	507
Sep	-	-	-	-	-	-
Oct	-	-	-	-	-	-
Nov	-	-	-	-	-	-
Dec	1 170	6	195.0	140	8.36	1 170
Total	6 624	90	73.6	3 140	2.11	10 841
Area 926						
Jan	22 480	268	83.9	19 760	1.14	22 480
Feb	8 877	141	63.0	9 680	0.92	8 877
Mar	5 078	100	50.8	6 240	0.81	5 078
Apr	2 049	32	64.0	2 120	0.97	2 049
May	2 583	56	46.1	2 960	0.87	2 583
Jun	6 651	137	48.5	9 460	0.70	6 651
Jul	9 317	179	52.0	12 160	0.77	9 317
Aug	43 245	524	82.5	44 300	0.98	52 960
Sep	91 097	707	128.9	65 230	1.40	99 051
Oct	79 799	709	112.6	65 850	1.21	85 637
Nov	70 647	638	110.7	56 280	1.26	77 508
Dec	56 838	507	112.1	42 490	1.34	63 021
Total	398 660	3 998	99.7	336 530	1.18	435 211
Area 927						
Jan	17 005	322	52.8	26 520	0.64	17 005
Feb	20 450	303	67.5	26 320	0.78	20 450
Mar	8 082	172	47.0	12 180	0.66	8 082
Apr	4 973	122	40.8	9 260	0.54	4 973
May	2 948	108	27.3	5 980	0.49	2 948
Jun	7 573	189	40.1	10 650	0.71	7 573
Jul	10 459	265	39.5	17 500	0.60	10 459
Aug	30 550	528	57.9	40 720	0.75	30 550
Sep	31 512	573	55.0	48 880	0.64	31 512
Oct	39 866	523	76.2	47 300	0.84	39 866
Nov	54 350	554	98.1	49 380	1.10	54 350
Dec	19 495	265	73.6	22 380	0.87	19 495
Total	247 262	3 924	63.0	317 070	0.78	247 262

TABLE 2: Landings (whole weight) of *Jasus edwardsii* and effort data during 1986 by statistical area; area boundaries shown in Fig. 1 (continued)

Month	Landed weight (kg) for returns with effort data	No. of vessel days fished	Av. weight landed per day fished (kg)	Estimated No. of pot-lifts	Av. weight landed per pot-lift (kg)	Total landed weight (kg) for all returns
Area 928						
Jan	20 390	288	70.8	24 050	0.85	20 390
Feb	17 162	256	67.0	20 780	0.83	17 162
Mar	11 897	193	61.6	15 840	0.75	11 897
Apr	1 190	37	32.1	2 060	0.58	1 190
May	207	7	29.6	270	0.77	207
Jun	2 517	25	100.7	1 910	1.32	2 517
Jul	5 372	61	88.1	4 930	1.09	5 372
Aug	15 568	304	51.2	23 500	0.66	15 568
Sep	17 723	313	56.6	28 320	0.63	17 723
Oct	32 246	400	80.6	37 600	0.86	32 246
Nov	39 338	408	96.4	38 260	1.03	39 338
Dec	35 743	359	99.6	34 680	1.03	38 638
Total	199 351	2 651	75.2	232 200	0.86	202 246
Area 929						
Jan	-	-	-	-	-	-
Feb	-	-	-	-	-	-
Mar	21	1	21.0	60	0.35	21
Apr	-	-	-	-	-	-
May	-	-	-	-	-	-
Jun	-	-	-	-	-	-
Jul	-	-	-	-	-	-
Aug	-	-	-	-	-	-
Sep	-	-	-	-	-	-
Oct	-	-	-	-	-	-
Nov	-	-	-	-	-	-
Dec	861	16	53.8	1 250	0.69	861
Total	882	17	51.9	1 310	0.67	882
Area 930						
Jan	407	25	16.3	750	0.54	407
Feb	986	54	18.3	2 000	0.49	986
Mar	-	-	-	-	-	-
Apr	51	5	10.2	140	0.36	51
May	-	-	-	-	-	-
Jun	-	-	-	-	-	-
Jul	111	8	13.9	200	0.55	111
Aug	156	13	12.0	390	0.40	156
Sep	1 014	33	30.7	1 340	0.76	1 014
Oct	556	22	25.3	950	0.59	556
Nov	1 116	42	26.6	1 640	0.68	1 116
Dec	863	39	22.1	1 360	0.63	863
Total	5 260	241	21.8	8 770	0.60	5 260

TABLE 2: Landings (whole weight) of *Jasus edwardsii* and effort data during 1986 by statistical area; area boundaries shown in Fig. 1 (continued)

Month	Landed weight (kg) for returns with effort data	No. of vessel days fished	Av. weight landed per day fished (kg)	Estimated No. of pot-lifts	Av. weight landed per pot-lift (kg)	Total landed weight (kg) for all returns
Area 931						
Jan	3 107	68	45.7	3 540	0.88	3 107
Feb	3 278	60	54.6	4 170	0.79	3 278
Mar	2 013	58	34.7	2 210	0.91	2 013
Apr	114	12	9.5	480	0.24	114
May	756	1	756.0	-	-	756
Jun	470	15	31.3	990	0.47	470
Jul	2 913	23	126.7	1 680	1.73	2 913
Aug	765	9	85.0	520	1.47	765
Sep	1 523	20	76.1	930	1.64	1 523
Oct	3 658	67	54.6	4 040	0.91	3 658
Nov	5 993	68	88.1	4 260	1.41	5 993
Dec	5 251	76	69.1	4 950	1.06	5 251
Total	29 839	477	62.6	27 770	1.07	29 839
Area 932						
Jan	110	13	8.4	660	0.17	110
Feb	50	6	8.3	320	0.16	50
Mar	75	3	25.0	150	0.50	75
Apr	-	-	-	-	-	-
May	-	-	-	-	-	-
Jun	-	-	-	-	-	-
Jul	483	10	48.3	400	1.21	483
Aug	1 718	37	46.4	2 390	0.72	1 718
Sep	1 997	49	40.8	3 040	0.66	1 997
Oct	3 291	42	78.4	2 710	1.21	3 291
Nov	220	14	15.7	590	0.37	220
Dec	299	14	21.4	730	0.41	299
Total	8 243	188	43.8	10 990	0.75	8 243
Area 933						
Jan	8 920	199	44.8	17 900	0.50	8 920
Feb	4 937	100	49.4	9 190	0.54	4 937
Mar	1 343	40	33.6	4 240	0.32	1 343
Apr	-	-	-	-	-	-
May	485	36	13.5	2 570	0.19	485
Jun	1 998	108	18.5	7 490	0.27	1 998
Jul	1 995	125	16.0	9 820	0.20	1 995
Aug	1 841	91	20.2	7 690	0.24	1 841
Sep	1 900	124	15.3	11 100	0.17	1 900
Oct	9 718	224	43.4	21 420	0.45	9 718
Nov	10 032	241	41.6	24 910	0.40	10 032
Dec	6 928	192	36.1	19 400	0.36	6 928
Total	50 095	1 480	33.8	135 730	0.37	50 095

TABLE 2: Landings (whole weight) of *Jasus edwardsii* and effort data during 1986 by statistical area; area boundaries shown in Fig. 1 (continued)

Month	Landed weight (kg) for returns with effort data	No. of vessel days fished	Av. weight landed per day fished (kg)	Estimated No. of pot-lifts	Av. weight landed per pot-lift (kg)	Total landed weight (kg) for all returns
Area 934						
Jan	940	8	117.5	670	1.40	940
Feb	588	12	49.0	620	0.95	588
Mar	249	6	41.4	220	1.13	249
Apr	-	-	-	-	-	-
May	-	-	-	-	-	-
Jun	-	-	-	-	-	-
Jul	-	-	-	-	-	-
Aug	-	-	-	-	-	-
Sep	-	-	-	-	-	-
Oct	217	10	21.7	400	0.54	217
Nov	523	12	43.6	740	0.71	523
Dec	1 040	23	45.2	1 570	0.66	1 040
Total	3 557	71	50.1	4 220	0.84	3 557
Area 935						
Jan	1 096	36	30.4	2 150	0.51	1 096
Feb	1 843	45	41.0	2 660	0.69	1 843
Mar	1 106	47	23.5	2 250	0.49	1 106
Apr	285	29	9.8	1 120	0.25	285
May	27	10	2.7	200	0.14	27
Jun	-	-	-	-	-	-
Jul	1 022	9	113.6	360	2.84	1 022
Aug	2 011	30	67.0	1 380	1.46	2 011
Sep	618	19	32.5	1 210	0.51	618
Oct	1 890	31	61.0	2 200	0.86	1 890
Nov	2 716	48	56.6	4 020	0.68	2 716
Dec	4 332	50	86.6	4 340	1.00	4 332
Total	16 945	354	47.9	21 890	0.77	16 945
Area 936						
Jan	1 461	63	23.2	3 380	0.43	1 461
Feb	2 362	67	35.3	3 690	0.64	2 362
Mar	2 245	69	32.5	3 650	0.62	2 245
Apr	1 298	32	40.6	1 820	0.71	1 298
May	526	14	37.6	710	0.74	526
Jun	62	22	2.8	440	0.14	62
Jul	208	22	9.5	440	0.47	208
Aug	17	3	5.7	20	0.85	17
Sep	536	14	38.3	930	0.58	536
Oct	1 393	40	34.8	1 990	0.70	1 393
Nov	3 423	73	46.9	4 640	0.74	3 423
Dec	5 171	95	54.4	6 220	0.83	5 171
Total	18 701	514	36.4	27 930	0.67	18 701

TABLE 2: Landings (whole weight) of *Jasus edwardsii* and effort data during 1986 by statistical area; area boundaries shown in Fig. 1 (continued)

Month	Landed weight (kg) for returns with effort data	No. of vessel days fished	Av. weight landed per day fished (kg)	Estimated No. of pot-lifts	Av. weight landed per pot-lift (kg)	Total landed weight (kg) for all returns
Area 937						
Jan	4 130	95	43.5	5 020	0.82	4 130
Feb	748	23	32.5	1 340	0.56	748
Mar	452	8	56.5	530	0.85	452
Apr	17	2	8.5	10	1.70	17
May	-	-	-	-	-	-
Jun	-	-	-	-	-	-
Jul	22	1	22.0	20	1.10	22
Aug	935	34	27.5	1 320	0.71	935
Sep	928	32	29.0	1 360	0.68	928
Oct	1 071	44	24.3	1 720	0.62	1 071
Nov	1 317	54	24.4	2 330	0.57	1 317
Dec	2 164	85	25.5	3 770	0.57	2 164
Total	11 783	378	31.2	17 420	0.68	11 783
Area 938						
Jan	-	-	-	-	-	-
Feb	-	-	-	-	-	-
Mar	-	-	-	-	-	-
Apr	-	-	-	-	-	-
May	-	-	-	-	-	-
Jun	-	-	-	-	-	-
Jul	-	-	-	-	-	-
Aug	-	-	-	-	-	-
Sep	-	-	-	-	-	-
Oct	-	-	-	-	-	-
Nov	-	-	-	-	-	-
Dec	-	-	-	-	-	-
Total	-	-	-	-	-	-
Area 939						
Jan	11 468	140	81.9	11 520	1.00	11 468
Feb	1 522	34	44.8	2 070	0.74	1 522
Mar	157	10	15.7	610	0.26	157
Apr	211	3	70.3	190	1.11	211
May	221	5	44.2	160	1.38	221
Jun	825	15	55.0	1 050	0.79	825
Jul	2 261	39	58.0	3 010	0.75	2 261
Aug	4 854	69	70.4	5 540	0.88	4 854
Sep	3 510	78	45.0	6 330	0.55	3 510
Oct	6 898	101	68.3	8 590	0.80	6 898
Nov	7 744	121	64.0	10 130	0.76	7 744
Dec	7 986	143	55.8	10 950	0.73	7 986
Total	47 657	758	62.9	60 150	0.79	47 657

TABLE 2: Landings (whole weight) of *Jasus edwardsii* and effort data during 1986 by statistical area; area boundaries shown in Fig. 1 (continued)

Month	Landed weight (kg) for returns with effort data	No. of vessel days fished	Av. weight landed per day fished (kg)	Estimated No. of pot-lifts	Av. weight landed per pot-lift (kg)	Total landed weight (kg) for all returns
Area 940						
Jan	25 077	156	160.7	16 150	1.55	25 077
Feb	38 653	184	210.1	18 000	2.15	38 653
Mar	-	-	-	-	-	-
Apr	-	-	-	-	-	-
May	5 569	52	107.1	4 000	1.39	5 569
Jun	10 852	106	102.4	9 400	1.15	10 852
Jul	8 278	87	95.1	7 170	1.15	8 278
Aug	7 452	70	106.5	6 150	1.21	7 452
Sep	3 512	41	85.6	3 810	0.92	3 512
Oct	11 195	79	141.7	6 910	1.62	11 195
Nov	19 164	146	131.3	13 440	1.43	19 164
Dec	25 762	153	168.4	15 970	1.61	25 762
Total	155 512	1 074	144.8	101 000	1.54	155 512
Area 941						
Jan	21 087	194	108.7	16 860	1.25	21 087
Feb	27 168	209	130.0	18 690	1.45	27 168
Mar	-	-	-	-	-	-
Apr	-	-	-	-	-	-
May	979	29	33.8	1 270	0.77	979
Jun	2 252	44	51.2	2 260	1.00	2 252
Jul	2 578	52	49.6	2 790	0.92	2 578
Aug	4 111	82	50.1	4 550	0.90	4 111
Sep	6 358	117	54.3	8 100	0.78	6 358
Oct	20 739	161	128.8	12 900	1.61	20 739
Nov	14 348	127	113.0	11 370	1.26	14 348
Dec	10 482	98	107.0	8 520	1.23	10 482
Total	110 100	1 113	98.9	87 310	1.26	110 100
Area 942						
Jan	34 987	223	156.9	23 920	1.46	34 987
Feb	40 749	293	139.1	29 550	1.38	40 749
Mar	-	-	-	-	-	-
Apr	-	-	-	-	-	-
May	1 820	23	79.1	1 670	1.09	1 820
Jun	5 926	49	120.9	3 740	1.58	5 926
Jul	3 373	41	82.3	2 550	1.32	3 373
Aug	2 084	25	83.3	1 480	1.41	2 084
Sep	2 729	39	70.0	2 260	1.21	2 729
Oct	15 023	90	166.9	8 280	1.81	15 023
Nov	38 905	190	204.8	18 690	2.08	38 905
Dec	55 873	194	288.0	23 030	2.43	55 873
Total	201 469	1 167	172.6	115 170	1.75	201 469

TABLE 2: Landings (whole weight) of *Jasus edwardsii* and effort data during 1986 by statistical area; area boundaries shown in Fig. 1 (continued)

Month	Landed weight (kg) for returns with effort data	No. of vessel days fished	Av. weight landed per day fished (kg)	Estimated No. of pot-lifts	Av. weight landed per pot-lift (kg)	Total landed weight (kg) for all returns
Area 943						
Jan	8 302	103	80.6	7 140	1.16	8 302
Feb	9 658	123	78.5	7 940	1.22	9 658
Mar	-	-	-	-	-	-
Apr	-	-	-	-	-	-
May	3 198	47	68.0	2 150	1.49	3 198
Jun	3 381	45	75.1	2 820	1.20	3 381
Jul	4 407	36	122.4	2 530	1.74	4 407
Aug	3 578	43	83.2	2 800	1.28	3 578
Sep	3 539	52	68.1	3 520	1.01	3 539
Oct	13 091	85	154.0	7 140	1.83	13 091
Nov	22 912	121	189.4	12 190	1.88	22 912
Dec	22 802	104	219.2	11 600	1.97	22 802
Total	94 865	759	125.0	59 830	1.59	94 865
New Zealand totals						
Jan	628 139	8 601	73.0	769 510	0.82	630 691
Feb	411 768	6 291	65.5	509 980	0.81	413 433
Mar	117 880	3 136	37.6	213 880	0.55	117 880
Apr	46 028	1 404	32.8	91 550	0.50	46 028
May	102 272	1 759	58.1	135 350	0.76	102 272
Jun	207 373	3 317	62.5	274 340	0.76	207 373
Jul	225 629	4 879	46.2	370 520	0.61	225 629
Aug	322 791	6 236	51.8	471 880	0.68	333 265
Sep	541 611	8 019	67.5	658 130	0.82	553 349
Oct	808 690	10 179	79.4	899 080	0.90	831 556
Nov	928 269	10 081	92.1	924 650	1.00	962 467
Dec	780 263	8 821	88.5	828 210	0.94	795 458
Total	5 120 711	72 723	70.4	6 147 080	0.83	5 219 399

TABLE 3: Landings (whole weight) of *Jasus edwardsii* during 1986 by controlled fishery area; area boundaries shown in Fig. 2

Controlled fishery area (statistical areas)	No. of vessels licensed	Landed weight (kg) for returns with effort data	No. of vessel days fished	Av. weight landed per day fished (kg)	Estimated No. of pot-lifts	Av. weight landed per pot-lift (kg)	Total landed weight (kg) for all returns
A, Northland (901-904, 939)	40	226 191	3 980	56.8	279 040	0.81	226 846
B, Taranaki (935-938)	15	47 429	1 246	38.1	67 240	0.71	47 429
C, Wellington-Hawke's Bay (912-915, 934)	90	924 633	11 075	83.5	1 106 060	0.84	924 633
D, Gisborne (909-911)	85	589 716	8 358	70.6	821 290	0.72	589 716
E, Bay of Plenty (905-908)	95	299 020	10 583	28.3	757 020	0.39	299 321
F, Canterbury-Marlborough (916-919, 932-933)	94	698 961	11 947	58.5	1 051 680	0.66	698 961
G, Otago (920-921)	84	314 111	4 844	64.8	391 690	0.80	314 870
H, Southern (922-928)	232	1 422 724	15 842	89.8	1 271 900	1.12	1 519 696
I, Westland (929-931)	9	35 981	735	49.0	37 850	0.95	35 981
J, Chatham Islands (940-943)	65	561 946	4 113	136.6	363 310	1.55	561 946
North & South Is. combined (901-939)	773	4 558 765	68 610	66.4	5 783 770	0.79	4 657 453
N.Z. totals	809	5 120 711	72 723	70.4	6 147 080	0.83	5 219 399

TABLE 4: Landings (whole weight) of *Jasus verreauxi* during 1986 by statistical area (only areas which recorded landings are shown); area boundaries shown in Fig. 1

Area	Total landed weight (kg)	Area	Total landed weight (kg)
901	4 265	910	2
902	2 679	912	1
903	454	915	6
904	125	936	3
906	10	937	8
908	33	939	65
		N.Z. total	7 651

TABLE 5: Landings (kg whole weight) by region (groups of points of landings) of *Jasus edwardsii* and *J. verreauxi* during 1986

Region of landing	<i>Jasus edwardsii</i>	<i>Jasus verreauxi</i>
Mangonui	122 292	6 708
Whangaroa	44 411	802
Bay of Islands	2 877	0
Hokianga	0	0
Whangarei	46 901	78
Auckland	5 706	0
Thames	0	0
Coromandel	7 037	0
Kawhia	4 584	8
Raglan	5 340	0
Manukau	0	0
Leigh	18 700	0
Mercury Bay	122 301	10
Tauranga	53 084	0
Whakatane	128 069	33
Gisborne	425 108	1
Napier	347 609	1
Castlepoint	610 923	0
Wellington	88 065	6
Makara	4 703	0
Paremata	2 455	0
Paraparaumu	0	0
Manawatu	0	0
Wanganui	259	0
New Plymouth	37 971	3
Kaipara	10 231	0
Golden Bay	25 055	0
Motueka	4 488	0
Nelson	6 163	0
Pelorus	0	0
Picton	39 947	0
Blenheim	20 394	0
Kaikoura	570 331	0
Lyttleton	6 455	0
Akaroa	40 293	0
Timaru	106	0
Oamaru	17 098	0
Moeraki	94 524	0
Karitane	89 597	0
Port Chalmers	99 257	0
Taieri Mouth	23 956	0
Nuggets	8 337	0
Waikawa	11 270	0
Riverton	268 157	0
Bluff	540 334	0
Milford	299 948	0
Stewart Island	264 743	0
Greymouth	129 296	0
Westport	9 081	0
Chatham Islands	561 946	0
Total for all ports	5 219 399	7 651

TABLE 6: Number of vessels in each controlled fishery area grouped according to the maximum number of pots in the water at any time during 1986

Controlled fishery area	1-50	51-100	101-150	151-200	201-250	>250
A, Northland	9	23	5	3		
B, Taranaki	5	9	1			
C, Wellington-Hawke's Bay	5	29	47	11	2	1
D, Gisborne	3	26	39	9	2	
E, Bay of Plenty	24	52	19			
F, Canterbury-Marlborough	13	37	30	13	1	4
G, Otago	7	40	16	1	1	
H, Southern	13	74	89	25	4	
I, Westland	5	4	2			
J, Chatham Islands	1	21	19	10	2	1
Total	85	315	267	72	12	6